

Collier County 2015

1 Population 343,802

2 MSW Management (tons)

A. Landfilled	289,594
B. Combusted	0
C. Recycled	365,140
D. Stockpiled	0
E. Total	654,734

E. Total Pounds per Capita Per Day 10.44

3 MSW Collected & Recycled

	Collected (tons)	Recycled (%)
A. Minimum 4 of 8		
Newspaper	20,633	65%
Glass	12,248	48%
Aluminum Cans	1,843	35%
Plastic Bottles	4,031	21%
Steel Cans	4,984	19%
Cardboard	47,829	82%
Office Paper	4,140	23%
Yard Trash	138,333	100%

B. Other Recyclables

Other Plastics	15,395	17%
Ferrous Metals	24,482	53%
White Goods	4,495	54%
Non-ferrous Metals	5,019	50%
Other Paper	17,496	27%
Textiles	6,441	28%
C&D Debris	240,391	52%
Food	40,690	5%
Miscellaneous	59,220	11%
Tires	7,064	59%
Processed Fuel	N/A	0%

C. Traditional Recycling Rate (%)

1) Unadjusted	56%
2) Adjusted	56%

D. Renewable Energy Recycling Credits

	Mwh	Recycling Credit (%)
1) Waste-to-Energy	0	0.00%
2) Landfill Gas	40,123	6.13%
3) Renewable Energy (other than WTE)	0	0.00%

E. Yard Trash Disposed in a Landfill Beneficially Using Landfill Gas (for something other than electricity)

	Mwh	Recycling Credit (%)
1) Unadjusted	0	0.0000%
2) Adjusted	0	0.0000%

F. Overall Recycling Rate (%)

1) Unadjusted	62%
2) Adjusted	62%

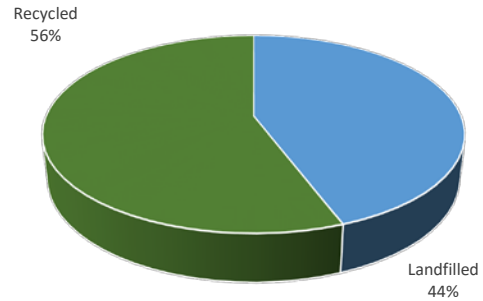
G. Participation in Recycling

	Units ¹	Percent ²
1) Single Family Curbside	116,747	85%
2) Multi-Family Curbside	40,132	60%
3) Commercial		
a) Scheduled Collection	4,645	80%
b) On Call Collection	0	0%

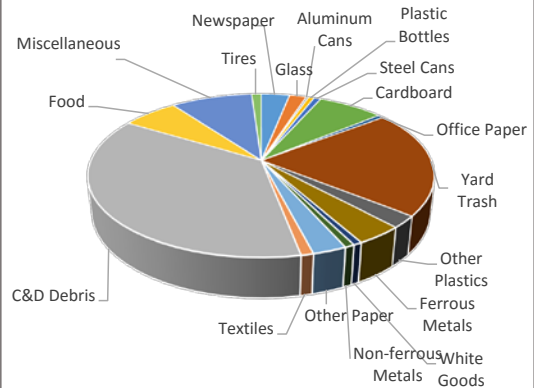
¹Represents the number of units with curbside service available.

²Represents the percent participation of units with service available.

MSW Management



MSW Composition



Summary of Recycling Credits

