

## Bay County 2016

**1 Population** 176,016

### 2 MSW Management (tons)

A. Landfilled	186,490
B. Combusted	96,719
C. Recycled	110,644
D. Stockpiled	0
E. Total	393,853

E. Total Pounds per Capita Per Day 12.26

### 3 MSW Collected & Recycled

	Collected (tons)	Recycled (%)
<b>A. Minimum 4 of 8</b>		
Newspaper	6,695	0%
Glass	6,302	0%
Aluminum Cans	1,182	14%
Plastic Bottles	3,151	3%
Steel Cans	1,969	2%
Cardboard	30,994	56%
Office Paper	3,938	11%
Yard Trash	24,812	33%

<b>B. Other Recyclables</b>		
Other Plastics	12,997	2%
Ferrous Metals	35,840	58%
White Goods	18,117	22%
Non-ferrous Metals	3,545	50%
Other Paper	1,969	20%
Textiles	4,726	11%
C&D Debris	89,995	0%
Food	15,360	4%
Miscellaneous	129,898	42%
Tires	2,363	40%
Processed Fuel	N/A	0%

#### C. Traditional Recycling Rate (%)

1) Unadjusted	28%
2) Adjusted	28%

<b>D. Renewable Energy Recycling Credits</b>	<b>Mwh</b>	<b>Recycling Credit (%)</b>
1) Waste-to-Energy	52,924	13.44%
2) Landfill Gas	0	0.00%
3) Renewable Energy (other than WTE)	0	0.00%

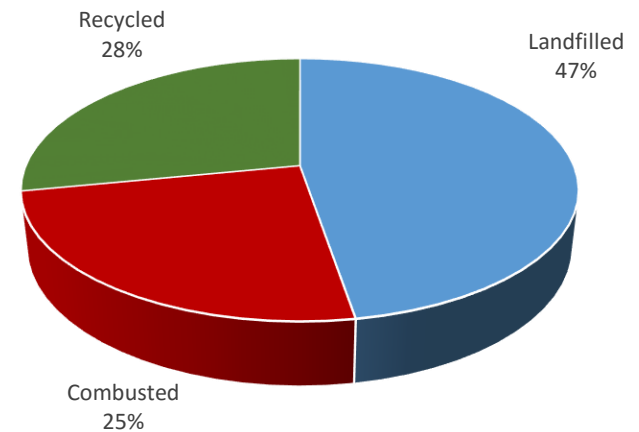
<b>E. Yard Trash Disposed in a Landfill Beneficially Using Landfill Gas (for something other than electricity)</b>	<b>Mwh</b>	<b>Recycling Credit (%)</b>
	0	0.0000%

#### F. Overall Recycling Rate (%)

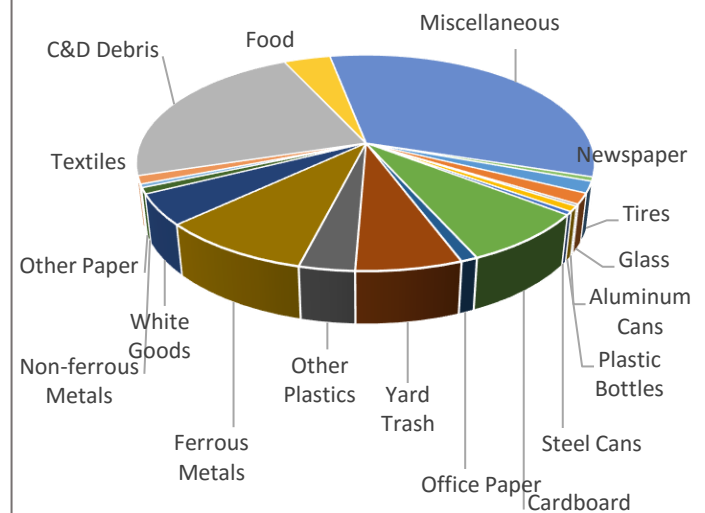
1) Unadjusted	42%
2) Adjusted	42%

<b>G. Participation in Recycling</b>	<b>Units<sup>1</sup></b>	<b>Percent<sup>2</sup></b>
1) Single Family Curbside	0	0%
2) Multi-Family Curbside	0	0%
3) Commercial		
a) Scheduled Collection	13,625	0%
b) On Call Collection	0	0%

### MSW Management



### MSW Composition



### Summary of Recycling Credits

